

# Case Study – Kingsley Fellowship Klub

Amount Granted: £5000 (Grassroots Walsall – Date Completed: February 2010)

## The Project:

Kingsley Fellowship Klub supports disadvantaged people living in Pleck & surrounding areas of Walsall. The Klub promotes educational, social, recreational and cultural activities for the benefit of all. We applied for Grassroots for funding towards the cost of improving the Kingsley centre by making it accessible for wheelchair users.



Total number of people benefiting from this project: 300+

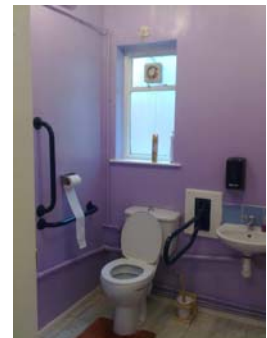
Area of Benefit: Walsall

## Why was the project needed?

We needed to make the building accessible for people in wheelchairs for our activities.

## The difference the project has made:

The modifications have made the building accessible for disabled people to attend our Walsall Disability Forum meetings and events. Now older and disabled people from our local community can use the club and take part in Bingo, coffee mornings, meetings and social nights.



## Quote:

*"Kingsley Fellowship Klub has come a long way in a very short time bringing their venue up to date so that disadvantaged people can utilise its valuable resource, a well established group in a location of depravity that has strived to meet local needs. The Department of Health initiative in all borough's across the nation have utilised the venue with meetings being held from the Disability Sub Group, this also brings added value to disadvantaged peoples lives and well being. Well done KFK a nomination well deserved we wish you all the best at the Awards 2010."*



## Grassroots Walsall is administered by:

Birmingham Community Foundation, Nechells Baths, Nechells Park Road, Nechells, Birmingham, B7 5PD

Tel: 0121 322 5560 @ Fax: 0121 322 5579

Email: team@bhamfoundation.co.uk @ Web: www.bhamfoundation.co.uk

grassroots  
grants

Managed by the Community Development Foundation  
Funded by the Office of the Third Sector

birmingham  
community  
**FOUNDATION**  
targeting communities in need

